

During your short STAY at SESAME

Follow up the following basic Safety Instructions

- ☐ **After filling on line visit request form, read the following before arrival to SESAME and make sure you understood all instructions and ask if you missed something.**
- ☐ **YOU MUST** know:
 - Your supervisor/ invited employee name, mobile number and office location.
 - Where you are, Safe and closest Emergency Exit, Closest First Aid box, Assembly point.
 - In case of chronic or Infectious diseases or implanted metals inform your supervisor.
- ☐ Follow up exactly what your supervisor (invited employee) telling you.
- ☐ All intended visited/ working areas (Tunnels/ hutches/ services/ experimental hall/ technical utilities/ roofs) are accessible **ONLY** with your supervisor and the area is **OPEN** clearly.
- ☐ The roofs of the tunnels are allowed **ONLY** during an evacuation process, if you were in the service area or in the tunnels, **unless** the nature of the work permits.
- ☐ Take care against an electrocution, **DO NOT TOUCH** uncovered wires/cables.
- ☐ **High degrees of care to all existing precaution tapes and signs and locked doors.**
- ☐ High degrees of care for all broadcasting messages, headsets are prohibited at all.
- ☐ Mind your steps and head.
- ☐ Do not step on cables or cable trays.
- ☐ Do not press an emergency push button not related to your work.
- ☐ In case of hearing **an ALARM bell**: leave the tunnels and building in calm way and make sure/ take care about the people which they are under your responsibility.
- ☐ Eating, drinking: **NOT** allowed inside the Main Hall, only water in a closed bottle.
- ☐ Smoking **ONLY** outside the building in the designated area.
- ☐ Keep work place/ visited areas clean and order all the times.
- ☐ **Do not** remove any shielding material/ machine/ tools/ else from it is location.
- ☐ **Do not** an unplugging data or power cables for any an electrical tool, call your supervisor.
- ☐ In case of dealing with electromechanical /general tools or chemicals, **are YOU eligible?**
- ☐ Put all needed protective equipments whenever are needed.
- ☐ Your comment and feedback are highly appreciated.
- ☐ Tell your supervisor/ invited employee in case of an improper situation has been seen.
- ☐ In case you made **any mistake**, please inform your supervisor as soon as possible.
- ☐ In case of an emergency medical case, call your supervisor or duty safety officer.
- ☐ **Take a look carefully** to the evacuation routes map in the second page.
- ☐ Open toe shoes or high/ thin pin heels shoes and Jewelry are **NOT ALLOWED**, Tied long hair.
- ☐ **NOTE**: SESAME site is under 24 hour surveillance.
- ☐ **Take care about your belongings.**
- ☐ **The total number of visitors has to be counted all the times.**
- ☐ **All subgroups MUST be together all the time with designated supervisor and inform your supervisor in case you would like to go somewhere.**
- ☐ **TEAM** spirit: **T**ogether **E**very one **A**chieved **M**ore.

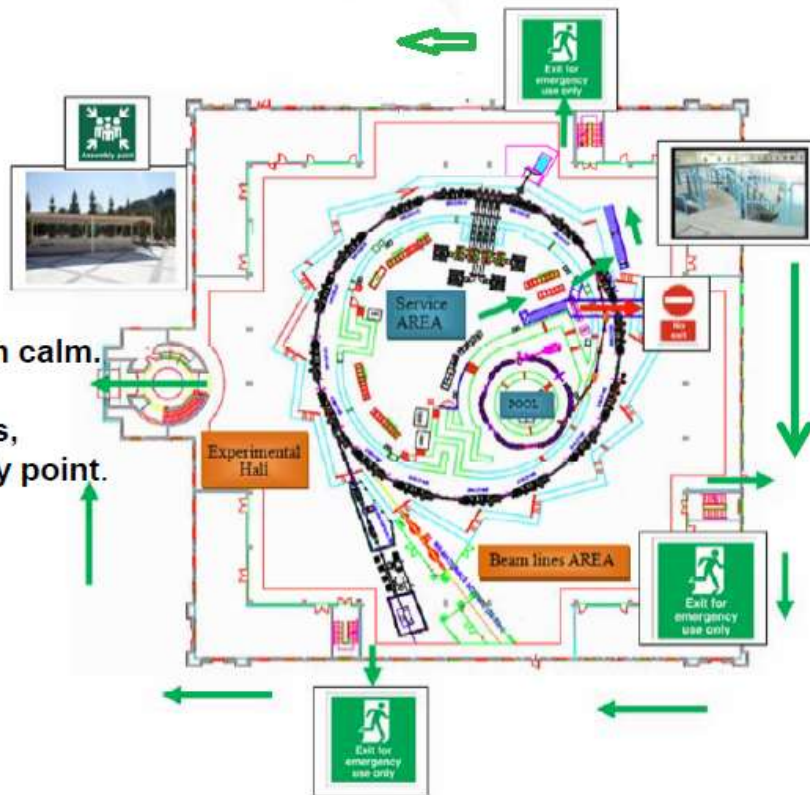
Thanks for full understanding and cooperation
Wish you pleasant and safe visit.
Safety is a way of life

Safety Committee
2019

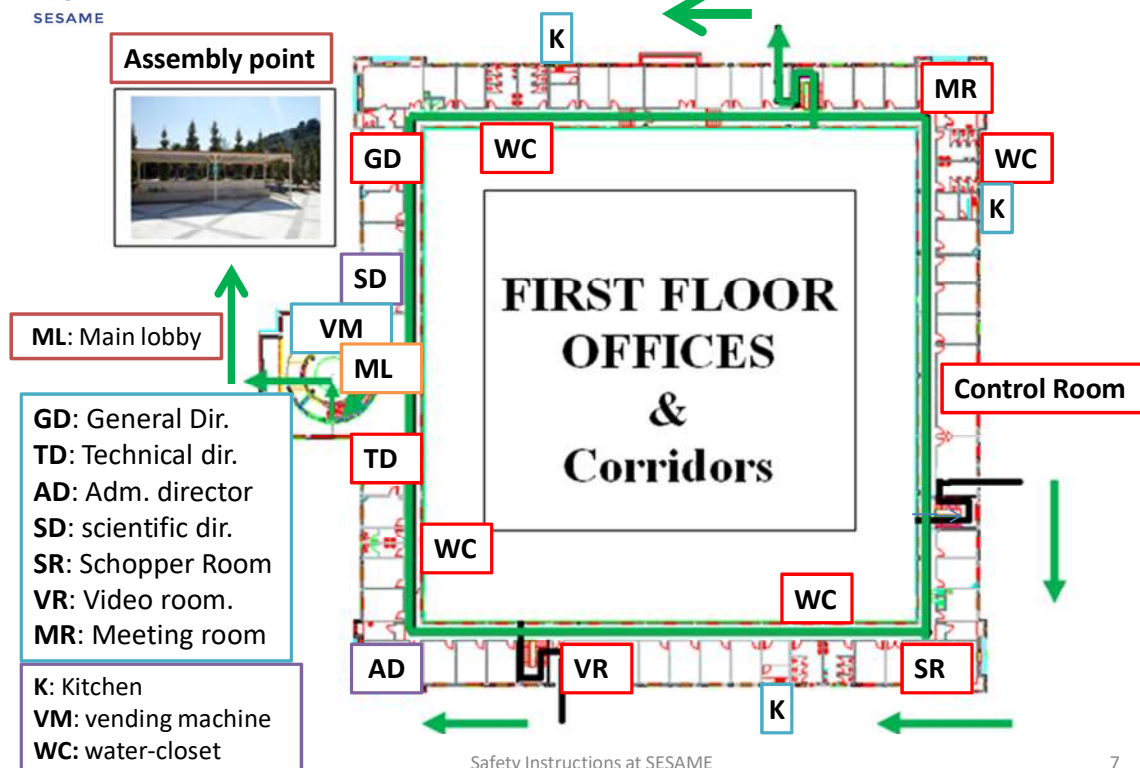
Evacuation/ Ground Floor/ hear ALARM bell

What TO DO?

- No panic, remain calm.
- Stop work,
- Follow exit signs,
- Stay at assembly point.



Evacuation/1st floor



Safety Instructions at SESAME

7